



HANHAM ABBOTS
JUNIOR SCHOOL

Pupil Premium Strategy for 2017-18



GRANT ALLOCATION AMOUNT

£84480

MAIN BARRIERS TO EDUCATIONAL ACHIEVEMENT FACED BY ELIGIBLE PUPILS?

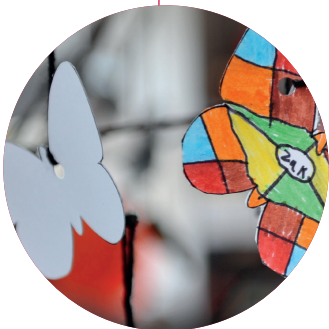
- Parental involvement and support with homework
- Ambition and motivation
- Resilience
- Life skills and experiences
- Basic English and maths skills
- Broken weeks in attendance



HOW WE WILL SPEND MONEY TO OVERCOME BARRIERS?

We will continue with spending in the areas that had the most positive impact last year as well as:

Parent workshops to support with learning
Resources including visitors to motivate learning
Additional out of school visits to enrich learning opportunities
Speech and Language therapist to liaise with teachers and parents



HOW WE WILL MEASURE IMPACT?

Data
Pupil voice
Parent voice



WHEN WE WILL REVIEW THE STRATEGY FOR 2017-18?

October 2018